



JUM-X2/JUM-X1

UNIVERSAL MILLING MACHINE

ITASU2.....1~230V,50Hz

ITASU1.....1~230V,50Hz

PARTS LIST



JPW Tool Group Hong Kong Limited

98 Granville Road, Tsimshatsui East, Kowloon, Hong Kong, PRC

www.jettools.com

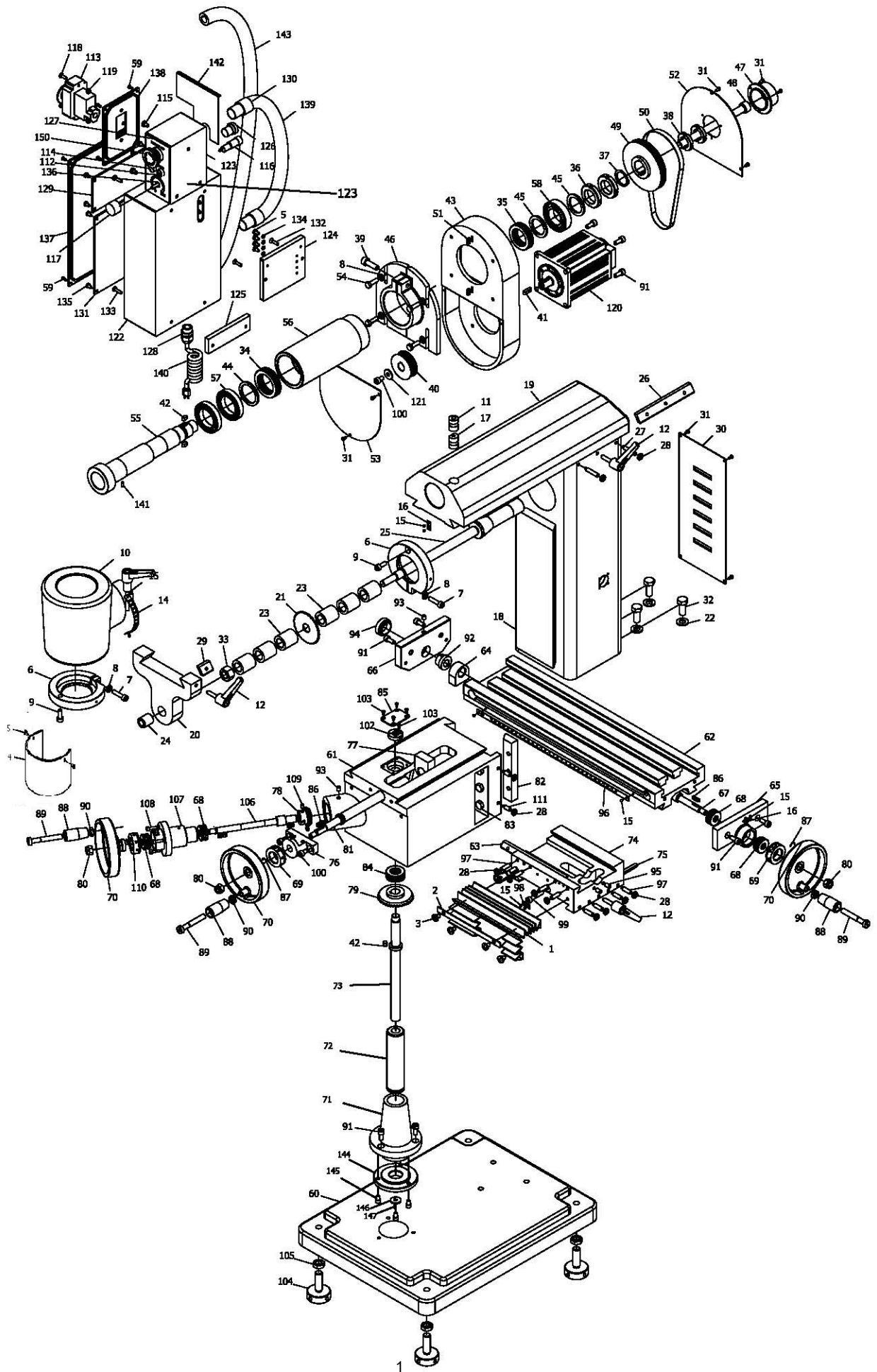
105082, : « »
www.jettools.ru , . 17

Made in PRC /

P-ITASU2/ITASU1

2022-11

Parts Breakdown For JUM-X2 / JUM-X1 Universal Milling Machine



PART LIST FOR JUM-X2 / JUM-X1 MILLING DRILLING CENTER

No.	Part no.	Description	Size	Qty.
1	JUMX1-001	Dust guard		1
2	JUMX1-002	Fixing plate		1
3	JUMX1-003	Screw	M6X8	4
4	JUMX1-004	Shield		1
5	JUMX1-005	Screw	M4X8	6
6	JUMX1-006	Lock sleeve		2
7	JUMX1-007	Hexagon socket head screw	M6X25	2
8	JUMX1-008	Washer		6
9	JUMX1-009	Hexagon socket head screw	M6X16	2
10	JUMX1-010	Spindle box		1
11	JUMX1-011	Latch segment I		1
12	JUMX1-012	Little handle		5
13	JUMX1-013	Locking screw	M6X50	1
14	JUMX1-014	Scale of degrees		1
15	JUMX1-015	Rivet for name plate	2X4	12
16	JUMX1-016	Indicator		3
17	JUMX1-017	Latch segment II	M6X8	1
18	JUMX1-018	Column (For JUM-X1)		1
	JUMX2-018	Column (For JUM-X2)		1
19	JUMX1-019	Ram		1
20	JUMX1-020	Junction block of horizontal milling bed		1
21	JUMX1-021	Blade milling cutter (optional accessory)		1
22	JUMX1-022	washer	10	3
23	JUMX1-023	Adjusting washer (II)		6
24	JUMX1-024	Bronze bushing		1
25	JUMX1-025	Spindle		1
26	JUMX1-026	Ram gag		1
27	JUMX1-027	Slotted headless set screw	M6X30	2
28	JUMX1-028	Hexagon nut	M6	12
29	JUMX1-029	Junction block gag		1
30	JUMX1-030	Cover		1
31	JUMX1-031	Cross recessed small pan head screw	M3X6	15
32	JUMX1-032	Hexagon screw	M10X25	3
33	JUMX1-033	Hexagon nut	M14	1
34	JUMX1-034	Rolling boll shaft		1
35	JUMX1-035	Rolling boll shaft		1
36	JUMX1-036	Slotted round nut	M27X1.5	2
37	JUMX1-037	Circlip	25	1
38	JUMX1-038	Slotted round nut	M20X1.5	2
39	JUMX1-039	Hexagon socket head screw	M8X25	1
40	JUMX1-040	Timing pulley		1
41	JUMX1-041	Parallel key	3X16	1
42	JUMX1-042	Parallel key	5X10	3
43	JUMX1-043	Pulley box		1
44	JUMX1-044	Washer (I)		1
45	JUMX1-045	Washer (II)		2

PART LIST FOR JUM-X2 / JUM-X1 MILLING DRILLING CENTER

No.	Part no.	Description	Size	Qty.
46	JUMX1-046	Gearbox bracket		1
47	JUMX1-047	Dust guard		1
48	JUMX1-048	Tension shaft		1
49	JUMX1-049	Synchronous pulley of spindle		1
50	JUMX1-050	Jugged synchronous belt	1.5X100X9	1
51	JUMX1-051	Parallel key	4X12	3
52	JUMX1-052	Top cover		1
53	JUMX1-053	Bottom cover		1
54	JUMX1-054	Hexagon headed bolt	M6X20	4
55	JUMX1-055	R8 spindle		1
56	JUMX1-056	Spindle socket		1
57	JUMX1-057	Rolling boll shaft		2
58	JUMX1-058	Rolling boll shaft		1
59	JUMX1-059	Tapping screw (for sheet metal)	ST2.9X9.5-C-H	8
60	JUMX1-060	Base (For JUM-X1)		1
	JUMX2-060	Base (For JUM-X2)		
61	JUMX1-061	Lift		1
62	JUMX1-062	Worktable		1
63	JUMX1-063	Vertical gag		1
64	JUMX1-064	Metric vertical screw nut		1
65	JUMX1-065	Bearing base		1
66	JUMX1-066	Left cover		1
67	JUMX1-067	Metric vertical screw		1
68	JUMX1-068	Thrust ball bearing	8200	4
69	JUMX1-069	Metric dial		2
70	JUMX1-070	Hand wheel		3
71	JUMX1-071	Nut base (For JUM-X1)		1
	JUMX2-071	Nut base (For JUM-X2)		
72	JUMX1-072	Metric lifting nut (For JUM-X1)		1
	JUMX2-072	Metric lifting nut (For JUM-X2)		
73	JUMX1-073	Metric lifting screw (For JUM-X1)		1
	JUMX2-073	Metric lifting screw (For JUM-X2)		
74	JUMX1-074	Saddle		1
75	JUMX1-075	Horizontal gag		1
76	JUMX1-076	Horizontal screw base		1
77	JUMX1-077	Metric horizontal screw nut		1
78	JUMX1-078	Little cone gear		1
79	JUMX1-079	Big cone gear		1
80	JUMX1-080	Hexagon locking nut	M8	3
81	JUMX1-081	Metric horizontal screw		1
82	JUMX1-082	Gag		1
83	JUMX1-083	Hexagon headed bolt	M8X25	3
84	JUMX1-084	Thrust ball bearing	8202	1
85	JUMX1-085	Cover		1
86	JUMX1-086	Parallel key	4X16	3
87	JUMX1-087	Damping spring		3

PART LIST FOR JUM-X2 / JUM-X1 MILLING DRILLING CENTER

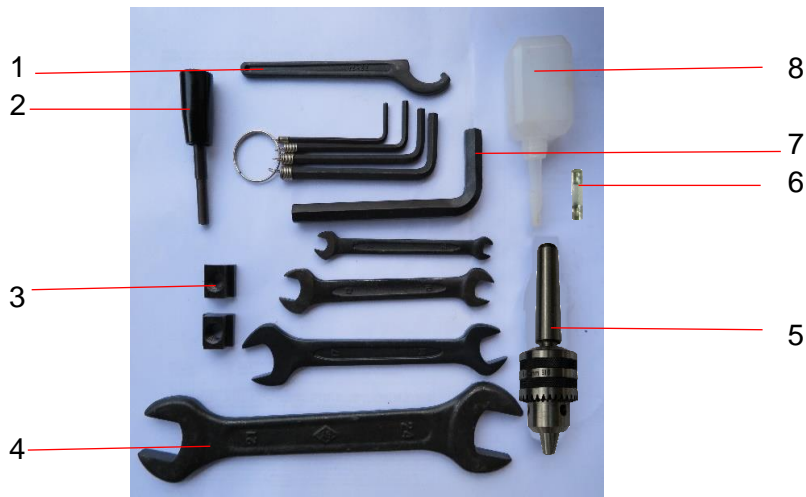
No.	Part no.	Description	Size	Qty.
88	JUMX1-088	Handle		3
89	JUMX1-089	Slotted circular headed screw	M8X55	3
90	JUMX1-090	Hexagon nut	M8	3
91	JUMX1-091	Hexagon socket head screw	M6X14	11
92	JUMX1-092	Vertical screw bracket left socket		1
93	JUMX1-093	Pressed-on forced filling oil cup		2
94	JUMX1-094	Left bracket cover		1
95	JUMX1-095	Hexagon set screw	M6X10	2
96	JUMX1-096	Metric ruler		1
97	JUMX1-097	Hexagon set screw	M6X22	8
98	JUMX1-098	Zero label		1
99	JUMX1-099	Hexagon socket head screw	M6X30	1
100	JUMX1-100	Hexagon socket head screw	M6X10	3
102	JUMX1-102	Locking nut		1
103	JUMX1-103	Cross slot sunk screw	M3X6	5
104	JUMX1-104	Footing adjusting screw		4
105	JUMX1-105	Hexagon nut	M12	4
106	JUMX1-106	Lifting axis		1
107	JUMX1-107	Bearing base		1
108	JUMX1-108	Hexagon socket head screw	M4X14	3
109	JUMX1-109	Slotted set screw with cone point	M5X8	2
110	JUMX1-110	Metric dial		1
111	JUMX1-111	Slotted headless set screw	M6X16	2
112	JUMX1-112	Yellow luminous tube with fixed base		1
113	JUMX1-113	Magnetic switch		1
114	JUMX1-114	Green light		1
115	JUMX1-115	Cross recessed small pan head screw	M5X8	3
116	JUMX1-116	Fuse holder		1
117	JUMX1-117	Potentiometer knob		1
118	JUMX1-118	Cross recessed small pan head screw	M4X12	2
119	JUMX1-119	Hexagon nut	M4	2
120	JUMX1-120	Brushless DC Motor	500W	1
121	JUMX1-121	Spring washer	6	1
122	JUMX1-122	PC board box		1
123	JUMX1-123	Switch box		1
124	JUMX1-124	Insert 1		1
125	JUMX1-125	Insert 2		1
126	JUMX1-126	Air joint		1
127	JUMX1-127	Switch label		1
128	JUMX1-128	Pendant control		1
129	JUMX1-129	Filter		1
130	JUMX1-130	Hose fitting		3
131	JUMX1-131	PC board		1
132	JUMX1-132	Screw	M4X16	2
133	JUMX1-133	Screw	M4X16	4
134	JUMX1-134	Elastic ring	M4	4

PART LIST FOR JUM-X2 / JUM-X1 MILLING DRILLING CENTER

No.	Part no.	Description	Size	Qty.
135	JUMX1-135	Tapping screw (for sheet metal)	ST4.2X9.5-C-H	8
136	JUMX1-136	Small PC board		1
137	JUMX1-137	PC board box		1
138	JUMX1-138	Switch box cover		1
139	JUMX1-139	Plastic tube		1
140	JUMX1-140	Standard power wire		1
141	JUMX1-141	Pin	B4x8	1
142	JUMX1-142	Connecting plate		1
143	JUMX1-143	Plastic tube		1
144	JUMX2-144	Lock ring		1
145	JUMX2-145	Screw	M5x8	4
146	JUMX2-146	Washer		1
147	JUMX2-147	Pin	2x6	1
150	JUMX2-150	Emergency stop button		1

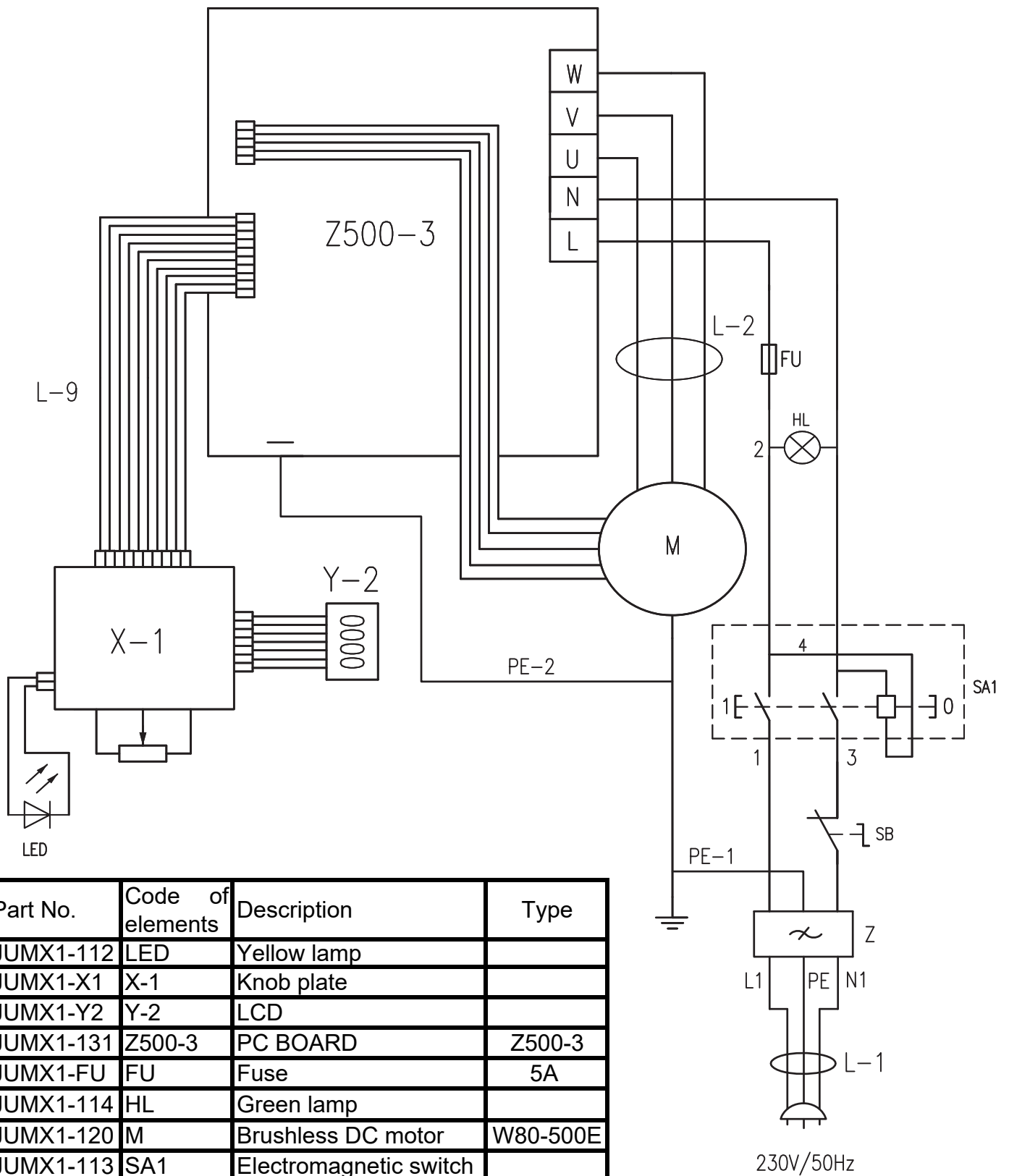
Standard Accessories List for JUM-X2/JUM-1 Universal Milling Machine

No.	Part no.	Description	Size	Qty.
1	JUMX1-ACC-001	Hook wrench	22-26	1
2	JUMX1-ACC-002	Gear shift lever		1
3	JUMX1-ACC-003	T-nut		2
4	JUMX1-ACC-004	Double end wrench	5.5x7, 10x12, 14x17, 21x24	each 1
5	JUMX1-ACC-005	Drill chuck with Tapper shank	B16 1-13mm, MT3	1 set
6	JUMX1-ACC-006	Fuse	5A	1
7	JUMX1-ACC-007	L hex wrench	3,4,5,6,8	each 1
8	JUMX1-ACC-008	Oil can		1
9	JUMX1-ACC-009	Footing adjusting screw		4



JUM-X1-M...ITASU1.....1~230V,50Hz

JUM-X2-M...ITASU2.....1~230V,50Hz



Part No.	Code of elements	Description	Type
JUMX1-112	LED	Yellow lamp	
JUMX1-X1	X-1	Knob plate	
JUMX1-Y2	Y-2	LCD	
JUMX1-131	Z500-3	PC BOARD	Z500-3
JUMX1-FU	FU	Fuse	5A
JUMX1-114	HL	Green lamp	
JUMX1-120	M	Brushless DC motor	W80-500E
JUMX1-113	SA1	Electromagnetic switch	
JUMX2-150	SB	Emergency stop switch	
JUMX1-129	Z	Filter	