



JMD-1

Milling Drilling Center

JMD-1-M ... 50000020M.....1~230V 50Hz

PARTS LIST



JPW Tool Group Hong Kong Limited

98 Granville Road, Tsimshatsui East, Kowloon, Hong Kong, PRC

www.jettools.com

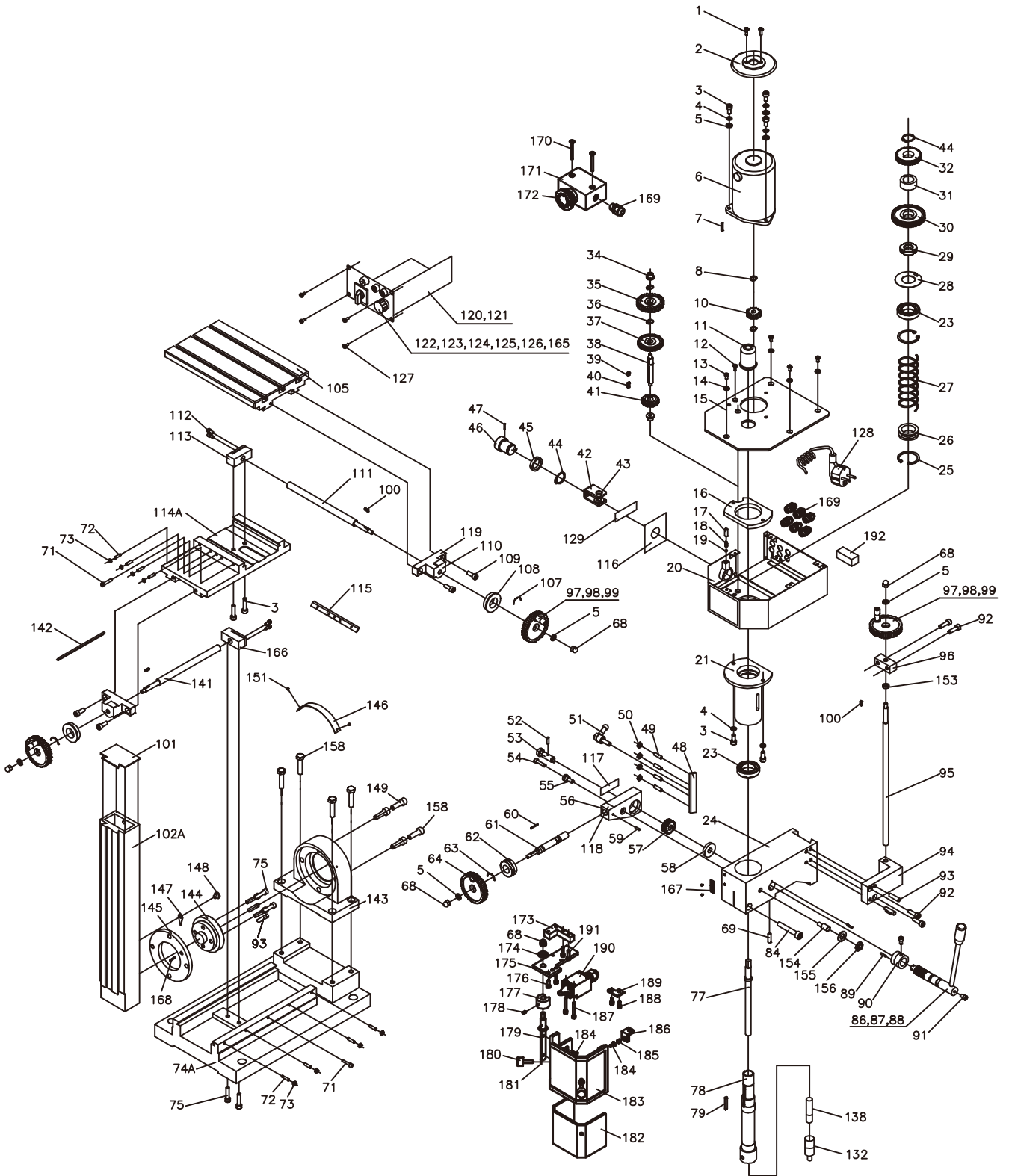
105082, « »
www.jettools.ru , ., .17

Made in PRC /

M-50000020M

2022-11

Parts Breakdown For JMD-1 Milling Drilling Center



Part List for JMD-1 Milling Drilling Center

No.	Part no.	Description	Size	Qty.
1	JMD1-001	Screw	M4X12	2
2	JMD1-002	Protect cover for motor		1
3	JMD1-003	Screw	M6X14	7
4	JMD1-004	Spring washer	6	5
5	JMD1-005	Washer	6	7
6	JMD1-006	DC Motor		1
7	JMD1-007	Round key	3X16	1
8	JMD1-008	Check ring for shaft	8	2
10	JMD1-010	Motor gear		1
11	JMD1-011	Safety cover		1
12	JMD1-012	Screw	M4X6	1
13	JMD1-013	Screw	M4X8	4
14	JMD1-014	Washer	4	4
15	JMD1-015	Up cover		1
16	JMD1-016	Sleeve support plate		1
17	JMD1-017	Screw	M6X5	1
18	JMD1-018	Compression spring		1
19	JMD1-019	Steel ball	5	1
20	JMD1-020	Gear-box		1
21	JMD1-021	Spindle sleeve		1
22	JMD1-022	Screw series #13061262 and down cancel series #13091263 and up	M6X14	2
23	JMD1-023	Bearing	61905-2E	2
24	JMD1-024	Spindle box		1
25	JMD1-025	Check ring for hole	38	2
26	JMD1-026	Spring seat ring		1
27	JMD1-027	Compression spring		1
28	JMD1-028	Round nut stop gasket	24	1
29	JMD1-029	Round nut	M24X1.5	1
30	JMD1-030	Spindle gear		1
31	JMD1-031	Spacer		1
32	JMD1-032	Spindle gear		1
33	JMD1-033	Check ring for shaft series # 13061262 and down cancel series #13091263 and up	20	1
34	JMD1-034	Power metallurgy bearing		2
35	JMD1-035	Gear		1
36	JMD1-036	Check ring for shaft	10	2
37	JMD1-037	change gear		1
38	JMD1-038	Shift shaft		1
39	JMD1-039	Key	4X8	1
40	JMD1-040	key	4 X12	1
41	JMD1-041	Change gear		1
42	JMD1-042	Dial fork		1
43	JMD1-043	Flange lining		2
44	JMD1-044	Check ring	20	2
45	JMD1-045	Spacer		1
46	JMD1-046	H/L change knob		1
47	JMD1-047	Spring pin	2x12	1

Part List for JMD-1 Milling Drilling Center

No.	Part no.	Description	Size	Qty.
48	JMD1-048	Wedge		1
49	JMD1-049	Screw	M5X18	4
50	JMD1-050	Nut	M5	4
51	JMD1-051	Handle		1
52	JMD1-052	Pin	B 3X12	1
53	JMD1-053	Joint shaft		1
54	JMD1-054	Screw	M5X20	1
55	JMD1-055	joint screw		1
56	JMD1-056	Worm base		1
57	JMD1-057	Helical gear		1
58	JMD1-058	Spacer		1
59	JMD1-059	Pin	3X18	1
60	JMD1-060	Key	2X10	1
61	JMD1-061	Worm shaft		1
62	JMD1-062	Dial		1
63	JMD1-063	Damp spring		1
64	JMD1-064	Handle wheel		1
67	JMD1-067	Washer series # 13061262 and down cancel series #13091263 and up	6	4
68	JMD1-068	Top nut	M6	5
69	JMD1-069	Screw	M6X20	1
71	JMD1-071	Screw	M4X20	2
72	JMD1-072	Screw	M4X20	8
73	JMD1-073	Nut	M4	8
74A	JMD1-074	Base		1
75	JMD1-075	screw	M6X20	6
77	JMD1-077	Lock screw		1
78	JMD1-078	Spindle		1
79	JMD1-079	Key	4X28	1
84	JMD1-084	Screw	M8X50	1
86	JMD1-086	Gear shaft		1
87	JMD1-087	Handle shaft		1
88	JMD1-088	Long handle sleeve		1
89	JMD1-089	Spring pin	3X12	2
90	JMD1-090	Mark show sleeve		1
91	JMD1-091	Screw	M5X8	2
92	JMD1-092	Screw	M6X20	4
93	JMD1-093	Pin	6X26	4
94	JMD1-094	Nut block		1
95	JMD1-095	Lifting screw		1
96	JMD1-096	Screw Support		1
97	JMD1-097	Handle wheel		3
98	JMD1-098	Handle bolt		3
99	JMD1-099	Handle sleeve		3
100	JMD1-100	Key	3X10	3
101	JMD1-101	Cover board		1
102A	JMD1-102	Spindle rail		1
105	JMD1-105	Worktable		1
107	JMD1-107	Damp spring		2

Part List for JMD-1 Milling Drilling Center

No.	Part no.	Description	Size	Qty.
108	JMD1-108	Dial		2
109	JMD1-109	Screw	M6X20	4
110	JMD1-110	Screw base		2
111	JMD1-111	Lengthways screw		1
112	JMD1-112	Screw	M4X8	4
113	JMD1-113	Lengthways nut		1
114A	JMD1-114	Big saddle		1
115	JMD1-115	Wedge		1
116	JMD1-116	Change speed label		1
117	JMD1-117	Joint label		1
118	JMD1-118	worm support		2
119	JMD1-119	Dial label		1
120	JMD1-120	Electricity box (box only)		1
	JMD1-120EMI	EMI-filter		1
121	JMD1-121	PC Board		1
122	JMD1-122	Power light		1
123	JMD1-123	Fuse box		1
	JMD1-123F	Fuse	5x25mm, 1A	1
124	JMD1-124	Variable resistor switch		1
125	JMD1-125	Forward/reverse switch		1
126	JMD1-126	Electricity label		1
127	JMD1-127	Screw	M3X8	4
128	JMD1-128	Power line		1
129	JMD1-129	Caution label		1
132	JMD1-132	Keyless Chuck 1-10mm	B12	1
138	JMD1-138	Taper shank MT2/ B12		1
141	JMD1-141	Cross screw		1
142	JMD1-142	Wedge		1
143	JMD1-143	Connect plate support		1
144	JMD1-144	Connect flange		1
145	JMD1-145	round clamp plate		1
146	JMD1-146	Scale		1
147	JMD1-147	Finger		1
148	JMD1-148	Screw	M6X6	1
149	JMD1-149	Screw		1
150	JMD1-150	Screw series # 13061262 and down cancel series #13091263 and up	M6*25	4
151	JMD1-151	Label rivet	2x4	10
153	JMD1-153	Spacer		1
154	JMD1-154	Adjust screw		1
155	JMD1-155	Washer	10	1
156	JMD1-156	Nut	M10	1
157	JMD1-157	Washer series # 13061262 and down cancel series #13091263 and up	M6	2
158	JMD1-158	Bolt	M8x25	4
159	JMD1-159	Spring washer series # 13061262 and down cancel series # 13091263 and up	8	4
160	JMD1-160	Washer series # 13061262 and down cancel series # 13091263 and up	8	4

Part List for JMD-1 Milling Drilling Center

No.	Part no.	Description	Size	Qty.
161	JMD1-161	Block up series # 13061262 and down		1
		cancel series # 13091263 and up		
162	JMD1-162	Guard series # 13061262 and down		1
		cancel series #13091263 and up		
163	JMD1-163	Washer series # 13061262 and down	4	2
		cancel series # 13091263 and up		
164	JMD1-164	Screw series # 13061262 and down	M4*14	2
		cancel series # 13091263 and up		
165	JMD1-165	Yellow lamp		1
166	JMD1-166	Cross nut		1
167	JMD1-167	Dial label		1
168	JMD1-168	Pin series	4x12	1
169	JMD1-169	Carbon Brush (not shown in the drawing) series # 13061262 and down		2
	JMD1-169A	Lock connector series #13091263 and up	M12	7
170	JMD1-170	Screw series #13091263 and up	M4X40	2
171	JMD1-171	Emergency stop switch box series #13091263 and up		1
172	JMD1-172	Emergency stop switch series #13091263 and up		1
173	JMD1-173	connect plate series #13091263 and up		1
174	JMD1-174	washer series #13091263 and up		1
175	JMD1-175	support plater series #13091263 and up		1
176	JMD1-176	screw series #13091263 and up	M4X12	2
177	JMD1-177	Spacer series #13091263 and up		1
178	JMD1-178	screw series #13091263 and up	M4X6	1
179	JMD1-179	Rotary shaft series #13091263 and up		1
180	JMD1-180	screw series #13091263 and up	M5X20	2
181	JMD1-181	washer series #13091263 and up		2
182	JMD1-182	inner protect cover series #13091263 and up		1
183	JMD1-183	outside protect cover series #13091263 and up		1
184	JMD1-184	screw series #13091263 and up	M4X10	3
185	JMD1-185	magnet block series #13091263 and up	φ6x5	1
186	JMD1-186	block series #13091263 and up		1
187	JMD1-187	screw series #13091263 and up	M4X30	2
188	JMD1-188	screw series #13091263 and up	M4X8	2
189	JMD1-189	Transition board series #13091263 and up		1
190	JMD1-190	limited switch series #13091263 and up		1
191	JMD1-191	screw series #13091263 and up	M4X16	2
192	JMD1-192	Carbon brush for motor	(not shown)	2

Standard Accessories List for JMD-1 Milling/Drilling Center

No.	Part no.	Description	Size	Qty.
1	JMD1-ACC-01	T nut		8
2	JMD1-ACC-02	Double end wrench	8 -10	1
3	JMD1-ACC-03	Double end wrench	5.5- 7	1
4	JMD1-ACC-04	Socket head wrench	38 - 42	1
5	JMD1-ACC-05	Fuse	1A	1
6	JMD1-ACC-06	Oil can		1
7	JMD1-ACC-07	Handle for spindle assemble		1
8	JMD1-ACC-08	L Hex wrench	3	1
9	JMD1-ACC-09	L Hex wrench	6	1
10	JMD1-ACC-10	Handle set		3



JMD-1-M...5000020M.....1~230V,50Hz

